

MORE **POWER** TO YOU

LT & HT
POLYMER / PORCELAIN
INSULATORS

PIPL





About Us

Prime Insulators Pvt Ltd is an ISO 9001: 2015 Certified Company located at Dalpur, Gujarat (INDIA). This company is engaged in Manufacturing of Porcelain & Polymer Insulators. We are the prominent manufacturer, supplier, and exporter of Pin, Disc, Long Rod, Guy, Line Post Insulators, Lightning Arrestors, Transformer Bushings and Solidcore DO Fuse Insulators...etc.

Our products are supplied with an assurance of superior performance and durability. We have completely synchronized the requirements of our clients and their need.

Our company is equipped with the latest imported and advanced Indian machineries. Latest automatic equipments, skilled workers and qualified professionals are the strengths that have given us a competitive edge in the industry. Our professionals and the facilities have potential to develop any insulators as per the customer's requirements.

With our rich experience and manufacturing expertise, we have been able to establish ourselves as a reliable entity in the market. Consequently, we are reckoned as one of the credible Insulators manufacturer in India.

Prime Insulators is continuously updating the manufacturing methods and equipments to ensure best quality to our customers. Prime Insulators has an installed capacity of 38 Lac Unit/Annum in Polymer Insulator with different sizes. Prime's Plant today consists of over 4, 48,000 square feet of manufacturing space and employees more than 300 people.



Director's Message

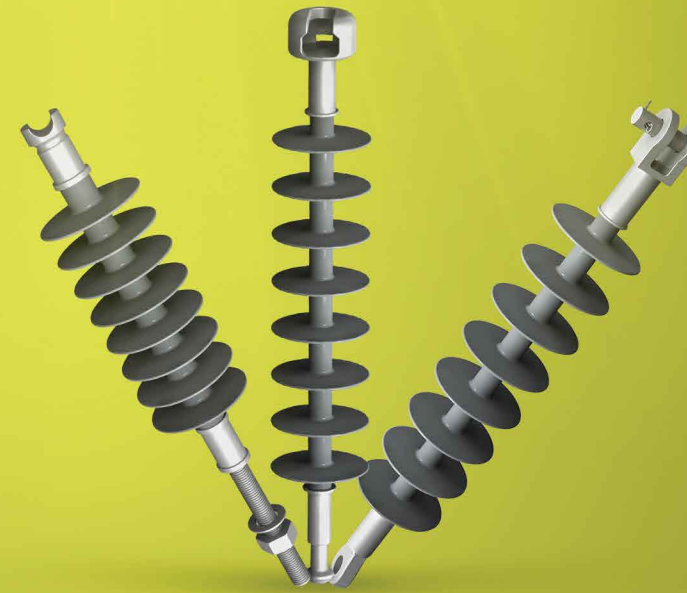
"Prime Insulators Pvt Ltd" was established in the year 2007 and we are progressing year on year with our turnover and supply quantity of Quality Insulators. This is happening due to our customer's satisfaction and our relentless efforts for improving the Quality and Performance of our Insulators.



Mission & Vision

Our vision is to continuously satisfy the customer's requirements in Polymer & Porcelain insulators and our mission is to deliver the same to the needy customers in a Quick Succession.

“
You
Name It
We Will
Make It



20 Years Experience

Our Journey with ceramic Industry has started back in 1979 with our first crockery – manufacturing unit named as "Ghansyam Ceramics".

We did not stop here we have started the tiles manufacturing unit in 1997 with unique brand name "SAHARA TILES".

We have started First-Manufacturing unit in 2002, called as **Crystal Glazes**. In 2003 we have started floor tile manufacturing facility with the same brand name mentioned above.

In 2006 we have started HT Insulator Manufacturing unit with unique brand name "PIPL" insulators to create an enduring benchmark in the industry.

Turnover

Always positive and growing.



Quality Policy

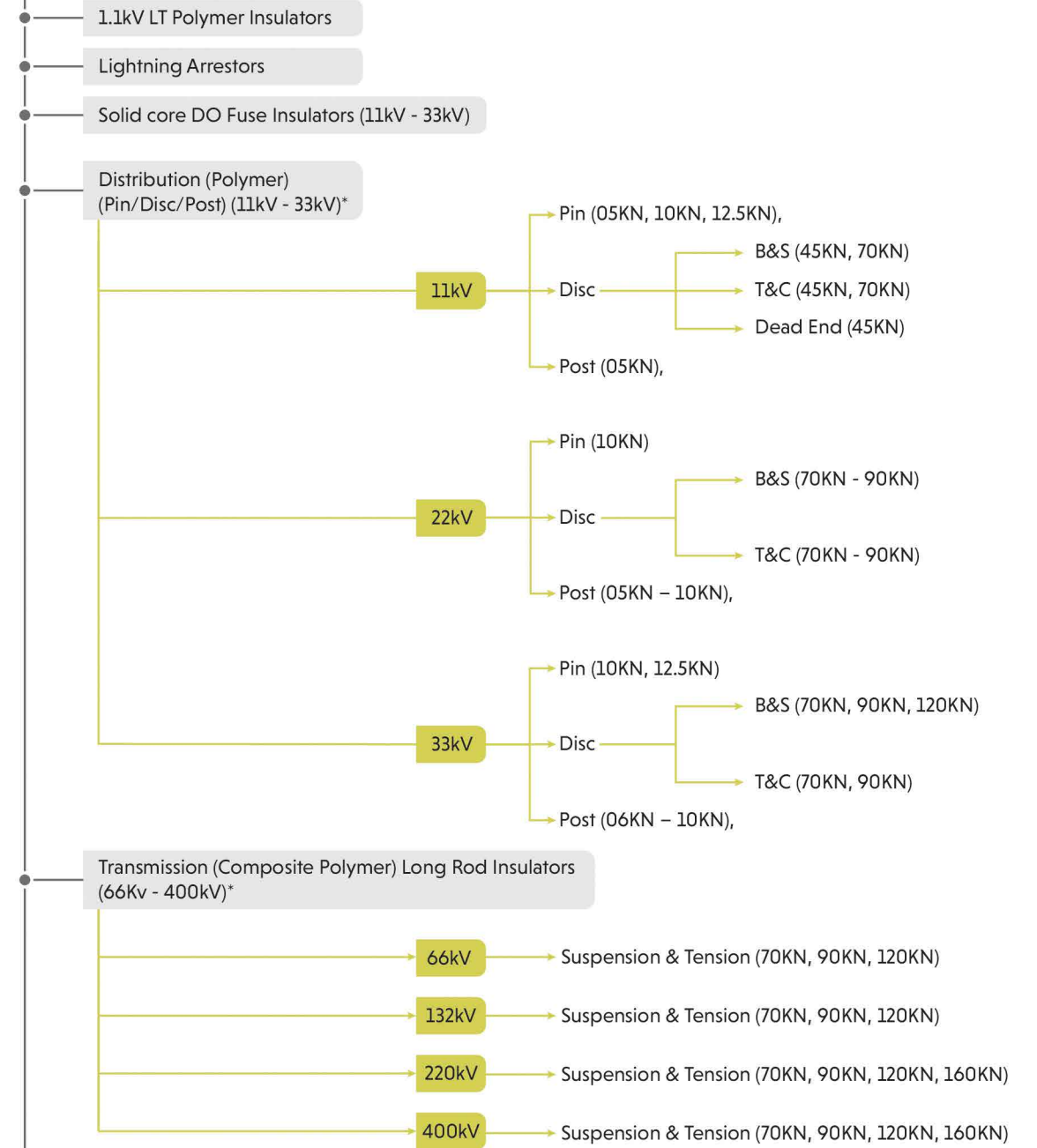
We are manufacturing world class Polymeric Composite Line Insulators (LT&HT) Ranging from 1.1 kV to 400 kV, Pin Insulators ranging from 11kV & 33kV, G.O.A.B (Gang Operated Air Break Isolating Switch), Lighting Arresters, Expulsion Fuse Cut-outs, Cable Terminal Boot for Transformer which conforms to international specifications and standards for application in power transmission and distribution

We are meeting all the specs as per the National & International Standards and our main aim is to improve the Quality to its logical end and carve a niche in the market place both nationally and internationally.

All our Insulators are Type Tested as per IEC and IS standards relevant for Polymer & Porcelain Insulators

PRODUCTS

Polymer Insulators



Porcelain Insulators

LT & HT Insulator up to 33kV

Dropout Fuses (Cut Out Fuses)

Polymer Insulators

1.1kV LT/LV

Voltage Rating: 1.1kV
Type: Pin / Solid core / Post

MINIMUM STANDARD PARTICULARS

Nominal System Voltage	1.1 kV
System Frequency	50 Hz
Creepage Distance	60mm to 100 mm
Power Frequency Withstand Voltage Dry	14 kV (rms)
Power Frequency Withstand Voltage Wet	8 kV (rms)
Impulse Voltage	22 kVp.
Standard	IEC 61109 / IEC 62217



Lightning Arrester

Voltage Rating: 9kV / 05KA
Type: Surge Arrester / Lightning Arrester (LA)

MINIMUM STANDARD PARTICULARS

Nominal System Voltage	09 kV
System Frequency	50 Hz
Partial Discharge	Less than 5 PC
Rated Discharge Current	5 KA
Residual Voltage	32 kV
Standard	IEC 60094



DO Fuse Insulator

11kV

Voltage Rating: 11KV / 15KV
Insulator Type: Composite Polymer Solid core DO Fuse Insulator / Cut out Fuse Insulator

MINIMUM STANDARD PARTICULARS

Nominal System Voltage	11 kV
Highest System Voltage	15 kV
System Frequency	50 Hz
Rated Current	100/ 200 Amps
Creepage Distance	320mm
Power Frequency Withstand Voltage Dry	45 kV (rms)
Power Frequency Withstand Voltage Wet	35 kV (rms)
Impulse Voltage	55 kVp.
Standard	IEC 61109 / IEC 60282

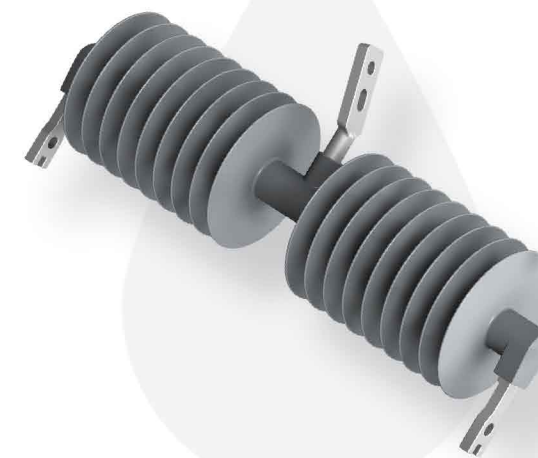


22kV

Voltage Rating: 22KV / 26KV
Insulator: Composite Polymer
Type : Solid core DO Fuse Insulator / Cut out Fuse Insulator

MINIMUM STANDARD PARTICULARS

Nominal System Voltage	22 kV
Highest System Voltage	26 kV
System Frequency	50 Hz
Rated Current	100/ 200 Amp
Creepage Distance	600 mm
Power Frequency Withstand Voltage Dry	60 kV (rms)
Power Frequency Withstand Voltage Wet	45 kV (rms)
Impulse Voltage	75 kVp.
Standard	IEC 61109 / IEC 60282



33KV

Voltage Rating: 33KV / 36KV
Insulator: Composite Polymer
Type: Solid core DO Fuse Insulator / Cut out Fuse Insulator

MINIMUM STANDARD PARTICULARS

Nominal System Voltage	3 kV
Highest System Voltage	36 kV
System Frequency	50 Hz
Rated Current	100/ 200 Amp
Creepage Distance	900mm / 1050mm
Power Frequency Withstand Voltage Dry	90 kV (rms)
Power Frequency Withstand Voltage Wet	70 kV (rms)
Impulse Voltage	170 kVp.
Standard	IEC 61109 / IEC 60282

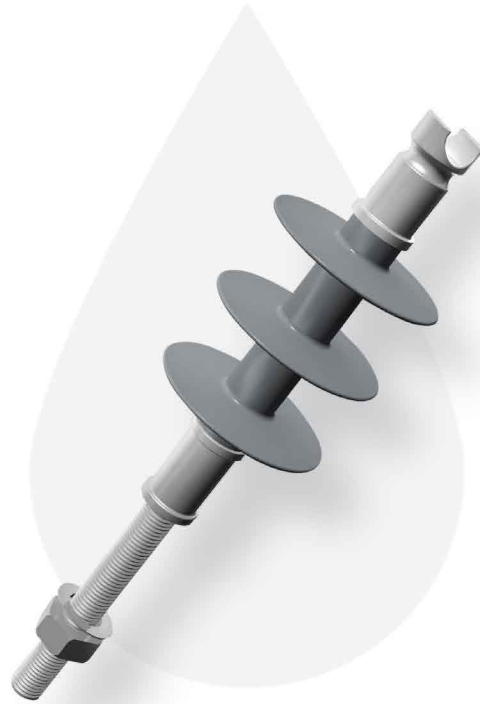
11kV Polymer Insulators

11kV

Voltage Rating: 11KV / 15KV
Insulator Type: Composite Polymer Pin Insulator
FRP Rod Diameters: Ø24mm/ Ø33.5mm
Minimum Failing Load: 05KN/ 10KN/ 12.5KN

MINIMUM STANDARD PARTICULARS

Nominal System Voltage	11 kV
Highest System Voltage	15 kV
System Frequency	50 Hz
Creepage Distance	320mm /400 mm
Power Frequency Withstand Voltage Dry	60 kV (rms)
Power Frequency Withstand Voltage Wet	45 kV (rms)
Impulse Voltage	75 kVp.
Standard	IEC 61109 / IEC 62217

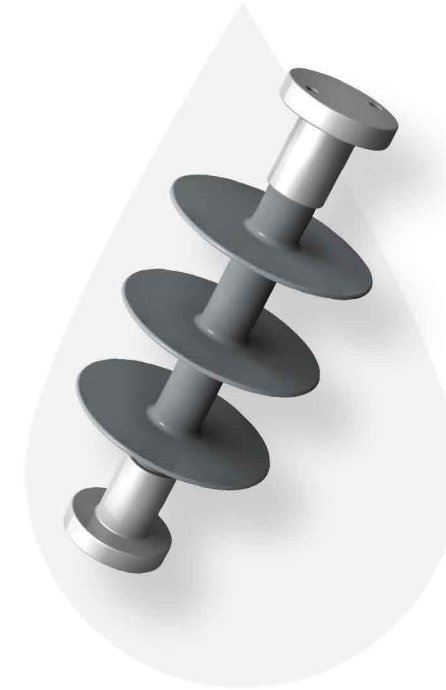


11kV

Voltage Rating: 11KV / 12KV
Insulator Type: Composite Polymer Solid core Insulator
FRP Rod Diameters: Ø16mm

MINIMUM STANDARD PARTICULARS

Nominal System Voltage	11 kV
Highest System Voltage	12 kV
System Frequency	50 Hz
Creepage Distance	320 mm / 600mm
Power Frequency Withstand Voltage Dry	60 kV (rms)
Power Frequency Withstand Voltage Wet	45 kV (rms)
Impulse Voltage	75 kVp.
Standard	IEC 61109 / IEC 62217

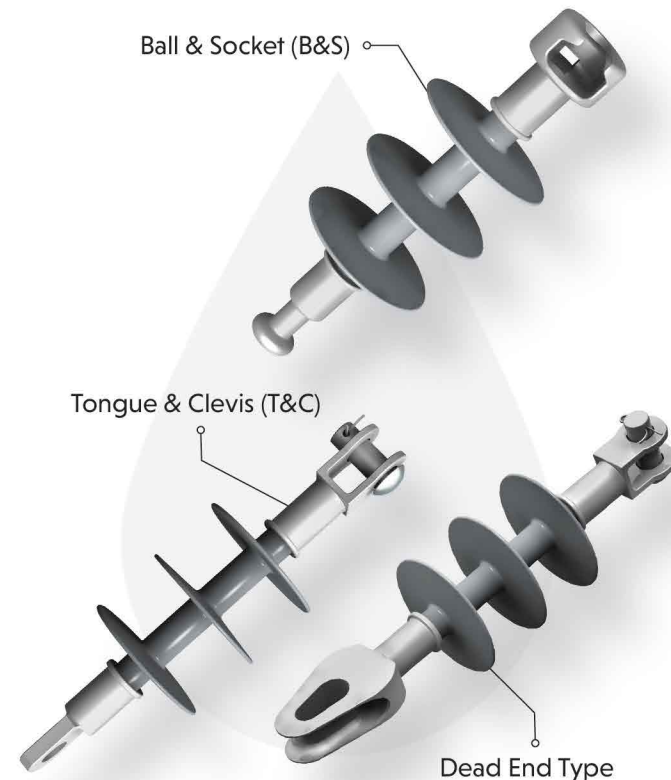


11kV

Voltage Rating: 11KV / 15KV
Type of Insulator: Composite Polymer Disc
 (Suspension/ Tension) Insulator
Type of End Fittings: Ball & Socket (B&S)/ Tongue & Clevis (T&C)/
 Dead End Type
FRP Rod Diameters: Ø16mm/ Ø18mm/ Ø20mm
Minimum Failing Load: 45KN/ 70KN/ 90KN

MINIMUM STANDARD PARTICULARS

Nominal System Voltage	11 kV
Highest System Voltage	15 kV
System Frequency	50 Hz
Creepage Distance	320mm /450 mm
Power Frequency Withstand Voltage Dry	60 kV (rms)
Power Frequency Withstand Voltage Wet	45 kV (rms)
Impulse Voltage	75 kVp.
Standard	IEC 61109 / IEC 62217



11kV

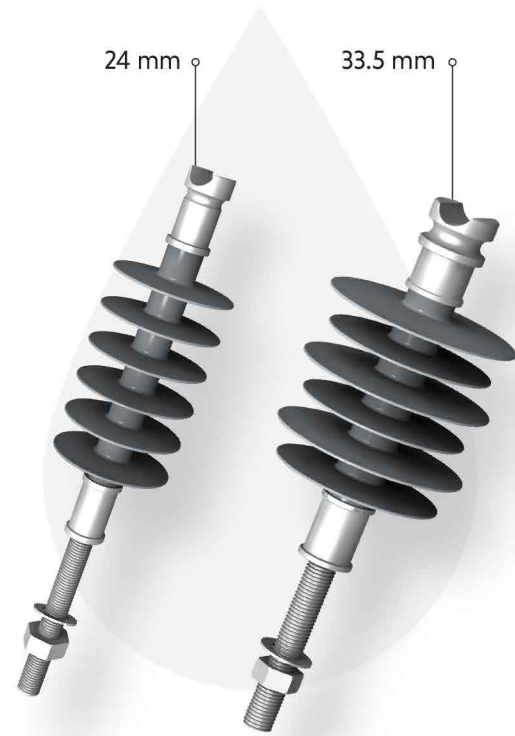
Voltage Rating: 11KV / 12KV
Insulator Type: Composite Polymer Post Insulator
FRP Rod Diameters: Ø24 mm / Ø33.5mm
Minimum Failing Load: 05KN to 10KN

MINIMUM STANDARD PARTICULARS

Nominal System Voltage	11 kV
Highest System Voltage	12 kV
System Frequency	50 Hz
Creepage Distance	320 mm / 450 mm
Power Frequency Withstand Voltage Dry	60 kV (rms)
Power Frequency Withstand Voltage Wet	45 kV (rms)
Impulse Voltage	75 kVp.
Pitch Circle Diameter (PCD)	57/ 76 mm
Height	254 mm / as per customer requirement
Standard	IEC 61109 / IEC 62217 / IEC 62231



22kV Polymer Insulators



22kV

Voltage Rating: 22KV / 24KV
Insulator Type: Composite Polymer Pin Insulator
FRP Rod Diameters: Ø24mm/ Ø33.5mm
Minimum Failing Load: 05KN/ 10KN/ 12.5KN

MINIMUM STANDARD PARTICULARS

Nominal System Voltage	22 kV
Highest System Voltage	24 kV
System Frequency	50 Hz
Creepage Distance	600 mm / 700mm
Power Frequency Withstand Voltage Dry	90 kV (rms)
Power Frequency Withstand Voltage Wet	70 kV (rms)
Impulse Voltage	150 kVp.
Standard	IEC 61109 / IEC 62217

22kV

Voltage Rating: 22KV / 24KV
Insulator Type: Composite Polymer Post Insulator
FRP Rod Diameters: Ø24 mm / Ø33.5mm
Minimum Failing Load: 05KN to 10KN

MINIMUM STANDARD PARTICULARS

Nominal System Voltage	22 kV
Highest System Voltage	24 kV
System Frequency	50 Hz
Creepage Distance	400 mm / 600mm
Power Frequency Withstand Voltage Dry	90 kV (rms)
Power Frequency Withstand Voltage Wet	70 kV (rms)
Impulse Voltage	150 kVp.
Pitch Circle Diameter (PCD)	57/ 76 mm
Height	254 mm to 450 mm
Standard	IEC 61109 / IEC 62217 / IEC 62231

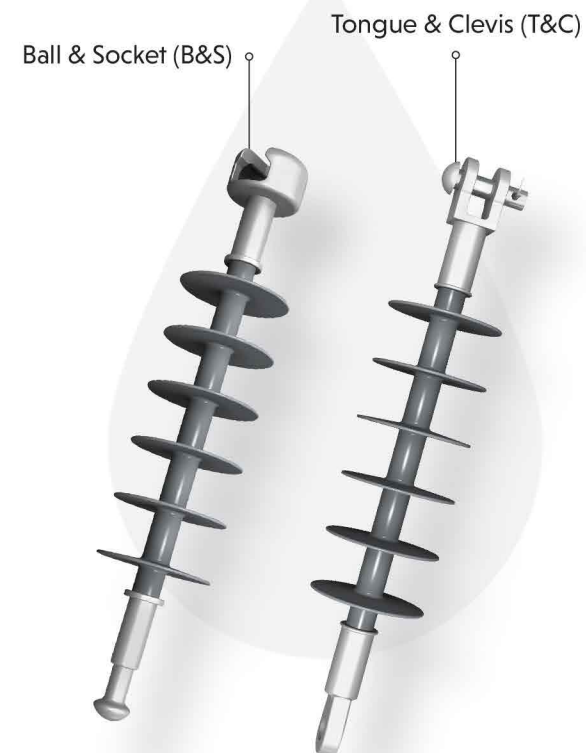


22kV

Voltage Rating: 22KV / 24KV
Type of Insulator: Composite Polymer Disc (Suspension/ Tension) Insulator
Type of End Fittings: Ball & Socket (B&S)/ Tongue & Clevis (T&C)
FRP Rod Diameters: Ø16mm/ Ø18mm/ Ø20mm
Minimum Failing Load: 45KN/ 70KN/ 90KN

MINIMUM STANDARD PARTICULARS

Nominal System Voltage	22 kV
Highest System Voltage	24 kV
System Frequency	50 Hz
Creepage Distance	600 mm / 700mm
Power Frequency Withstand Voltage Dry	90 kV (rms)
Power Frequency Withstand Voltage Wet	70 kV (rms)
Impulse Voltage	150 kVp.
Standard	IEC 61109 / IEC 62217

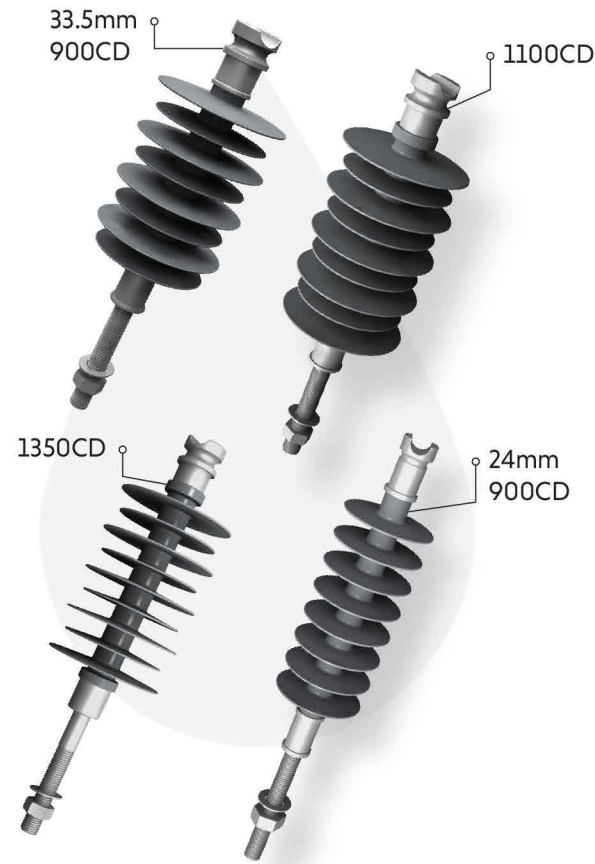


Machinery

Our set of latest manufacturing, testing, and laboratory equipment's involves Imported Injection Molding Machines, Crimping Machines, Ultrasonic Flaw Detector, Acoustic Emission machine, High Voltage testing equipment's to name a few.



Polymer Insulators



33kV

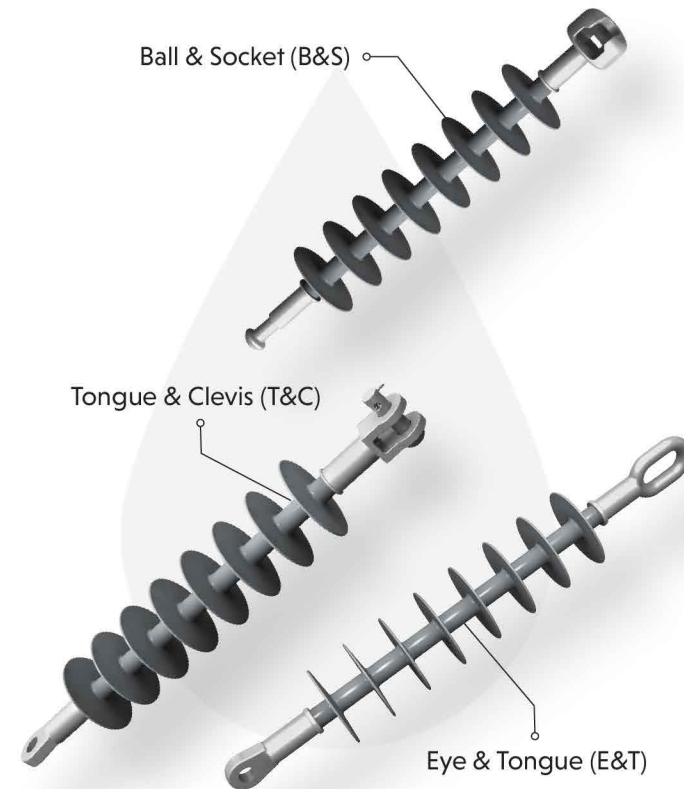
Voltage Rating: 33KV / 36KV
Insulator Type: Composite Polymer Pin Insulator
FRP Rod Diameters: Ø24mm / Ø33.5mm / Ø38mm
Minimum Failing Load: 05KN/ 10KN/ 12.5KN

MINIMUM STANDARD PARTICULARS	
Nominal System Voltage	33 kV
Highest System Voltage	36 kV
System Frequency	50 Hz
Creepage Distance	900 to 1300 mm
Power Frequency Withstand Voltage Dry	130 kV (rms)
Power Frequency Withstand Voltage Wet	90 kV (rms)
Impulse Voltage	230 kVp.
Standard	IEC 61109 / IEC 62217

33kV

Voltage Rating: 33KV / 36KV
Type of Insulator: Composite Polymer Disc (Suspension / Tension) Insulator
Type of End Fittings: Ball & Socket (B&S)/ Tongue & Clevis (T&C)/ Eye & Tongue (E&T)
FRP Rod Diameters: Ø16mm/ Ø18mm/ Ø20mm / Ø24mm
Minimum Failing Load: 45KN/ 70KN/ 90KN / 120KN

MINIMUM STANDARD PARTICULARS	
Nominal System Voltage	33 kV
Highest System Voltage	36 kV
System Frequency	50 Hz
Creepage Distance	900 to 1300 mm
Power Frequency Withstand Voltage Dry	130 kV (rms)
Power Frequency Withstand Voltage Wet	90 kV (rms)
Impulse Voltage	230 kVp.
Standard	IEC 61109 / IEC 62217



33kV

Voltage Rating: 33KV / 36KV
Insulator Type: Composite Polymer Post Insulator
FRP Rod Diameters: Ø24 mm / Ø33.5mm / Ø38mm
Minimum Failing Load: 05KN to 10KN

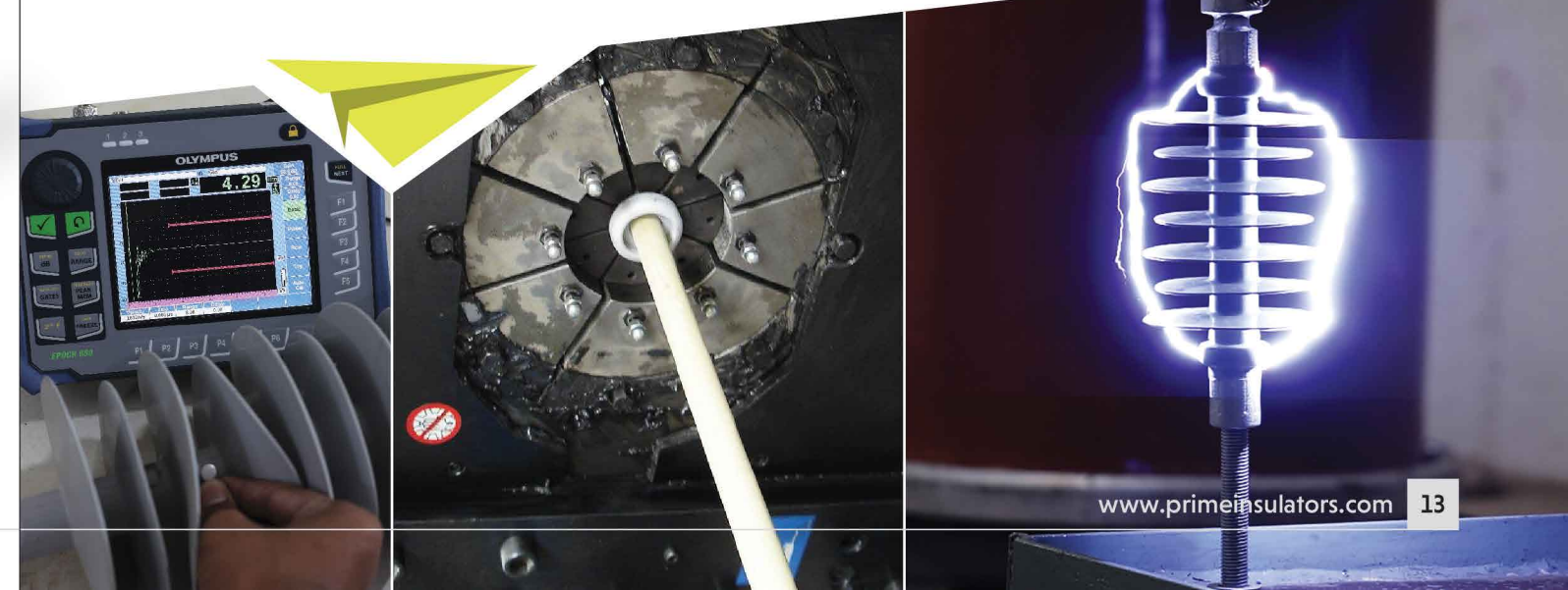
MINIMUM STANDARD PARTICULARS	
Nominal System Voltage	33 kV
Highest System Voltage	36 kV
System Frequency	50 Hz
Creepage Distance	900 to 1300 mm
Power Frequency Withstand Voltage Dry	130 kV (rms)
Power Frequency Withstand Voltage Wet	90 kV (rms)
Impulse Voltage	230 kVp.
Pitch Circle Diameter (PCD)	57mm / 76 mm
Height	508 mm or as per customer requirement
Standard	IEC 61109 / IEC 62217 / IEC 62231

Test Reports

PIPL abide to IS / IEC/ ASTM standards and design, develop and manufacture products to suit the standards and global needs. All our products are type tested according to the relevant standard for each product category from NABL laboratories CPRI & ERDA.

Manufacturing Capacity

While quality has been our forte, PIPL does not holds back when it comes to manufacturing capacity, Our manufacturing capacity is a whopping quantity of 3.8 million insulators per annum.

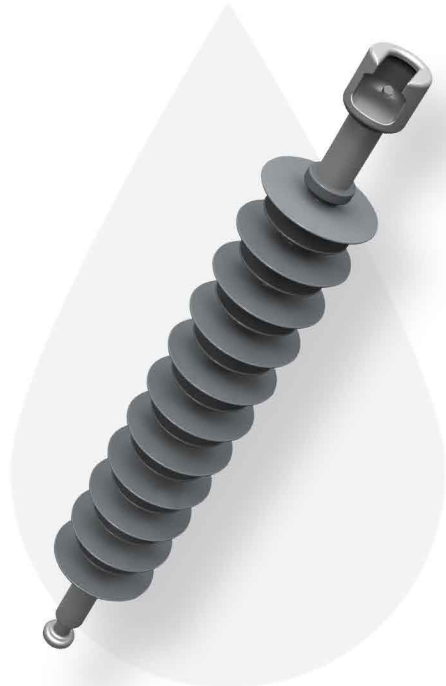


Long Road Insulators

66kV

Voltage Rating: 66KV / 72.5 KV
Insulator Type: Composite Polymer long rod Insulator
FRP Rod Diameters: Ø24mm
Minimum Failing Load: 70KN/ 90KN/ 120KN

MINIMUM STANDARD PARTICULARS	
Nominal System Voltage	66 kV
Highest System Voltage	72.5 kV
System Frequency	50 Hz
Creepage Distance	2248 mm
Power Frequency Withstand Voltage Dry	160 kV (rms)
Power Frequency Withstand Voltage Wet	140 kV (rms)
Standard	IEC 61109 / IEC 62217



132kV

Voltage Rating: 110KV/ 132KV / 145 KV
Insulator Type: Composite Polymer long rod Insulator
FRP Rod Diameters: Ø24mm
Minimum Failing Load: 70KN/ 90KN/ 120KN

MINIMUM STANDARD PARTICULARS	
Nominal System Voltage	132 kV
Highest System Voltage	145 kV
System Frequency	50 Hz
Creepage Distance	4495 mm
Power Frequency Withstand Voltage Dry	325 kV (rms)
Power Frequency Withstand Voltage Wet	275 kV (rms)
Standard	IEC 61109 / IEC 62217



220kV

Voltage Rating: 220KV / 245 KV
Insulator Type: Composite Polymer long rod Insulator
FRP Rod Diameters: Ø24mm
Minimum Failing Load: 90KN/ 120KN / 160KN

MINIMUM STANDARD PARTICULARS	
Nominal System Voltage	22 kV
Highest System Voltage	24 kV
System Frequency	50 Hz
Creepage Distance	600 mm / 700mm
Power Frequency Withstand Voltage Dry	90 kV (rms)
Power Frequency Withstand Voltage Wet	70 kV (rms)
Impulse Voltage	150 kVp.
Standard	IEC 61109 / IEC 62217

400kV

Voltage Rating: 400KV / 420 KV
Insulator Type: Composite Polymer long rod Insulator
FRP Rod Diameters: Ø24mm
Minimum Failing Load: 120KN / 160KN/ 210KN

MINIMUM STANDARD PARTICULARS	
Nominal System Voltage	400 kV
Highest System Voltage	420 kV
System Frequency	50 Hz
Creepage Distance	13020 mm
Power Frequency Withstand Voltage Dry	700 kV (rms)
Power Frequency Withstand Voltage Wet	650 kV (rms)
Standard	IEC 61109 / IEC 62217

Porcelain Insulators



Our range of products includes in porcelain type:

LT/ LV

- 1.1kV LT Porcelain Pin Insulator
- Shackle / Egg Type Insulators
- Guy / Strain / Stay Insulators
- Coach Screw Insulators

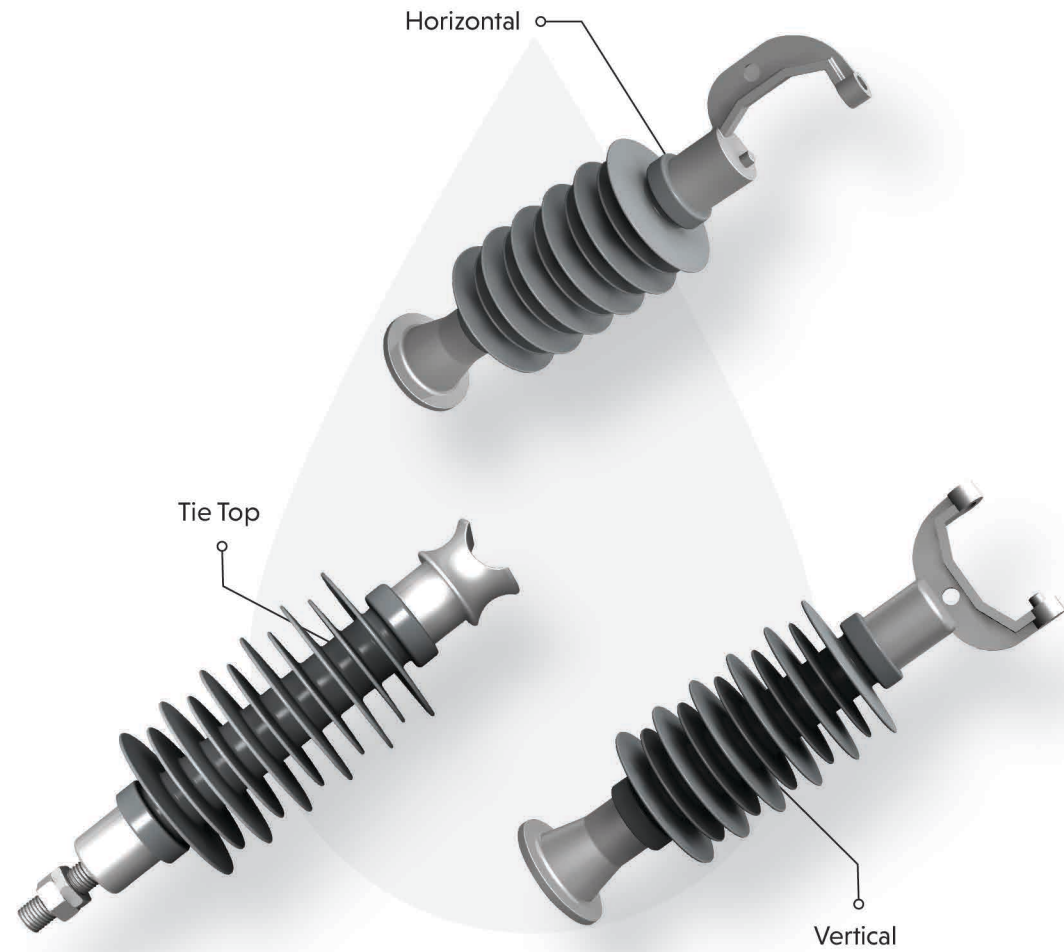
HT/ H.V.

- Pin Insulators
- Disc Insulators
- Post Insulators
- Solidcore Insulators

Bushings

- 1.1kV 250Amp Porcelain Bushing IS 3347
- 17.5Kv 250Amp Porcelain Bushing IS 3347

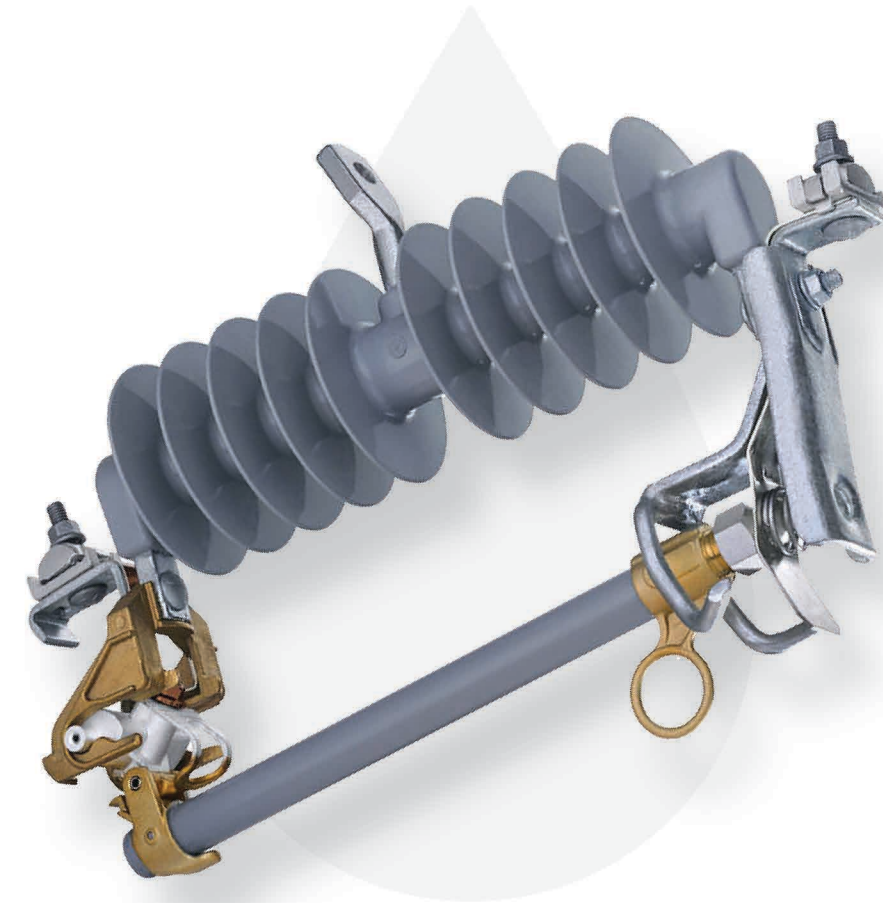
Line Post Insulators



Voltage Rating: 15KV / 28KV/ 36kV
Insulator: Composite Polymer Post Insulator
Type: Horizontal / Vertical/ Tie Top
Minimum Failing Load: 05KN to 16KN

System Parameters	12KV-15KV	22KV-28KV	33KV-36KV
Nominal System Voltage	12KV	22KV	33 KV
Highest System Voltage	15KV	28KV	36 KV
System Frequency	50 Hz	50 Hz	50 Hz
Creepage Distance	300 to 450mm	600 to 780mm	900 to 1350 mm
Power Frequency Withstand Voltage Dry	70 kV (rms)	110 kV (rms)	130 kV (rms)
Power Frequency Withstand Voltage Wet	45 kV (rms)	70 kV (rms)	90 kV (rms)
Impulse Voltage	110 kV (rms)	150 kV (rms)	230 kV (rms)
Standard	IEC 62231/IEC 60815	IEC 62231/IEC 60815	IEC 62231/IEC 60815

Dropout Fuses (Cut Out Fuses)



Voltage Rating: 15KV / 28KV/ 36kV – 100/200 Amp.
Insulator: Composite Polymer Insulator
Type: Drop Out (DO) Fuse / Explosion Fuse Cut Out

System Parameters	12KV-15KV	22KV-28KV	33KV-36KV
Nominal System Voltage	12KV	22KV	33 KV
Highest System Voltage	15KV	28KV	36 KV
System Frequency	50 Hz	50 Hz	50 Hz
Rated Current	100/200 Amp	100/200 Amp	100/200 Amp
Creepage Distance	300 to 450mm	600 to 700mm	900 to 1116 mm
Power Frequency Withstand Voltage Dry	45 kV (rms)	55 kV (rms)	90 kV (rms)
Power Frequency Withstand Voltage Wet	28 kV (rms)	35 kV (rms)	70 kV (rms)
Impulse Voltage	75 kVp	90 kVp	170 kVp
Standard	IEC 60282	IEC 60282	IEC 60282

Vendor Approvals & Clients



Sr. No.	Name of Vendor Authority / Board	Country / State
1	Electricity Company Of Ghana Limited	GHANA
2	Nepal Electricity Authority (NEA)	Nepal
3	Tamil Nadu Electricity Board - (TNEB/ TANGEDCO)	Tamilnadu
4	Kerala State Electricity Board – KSEB	Kerala
5	The Southern Power Distribution Company (TSSPDCL)	Telangana
6	Andhra Pradesh Eastern Power Distribution Company Limited (APEPDCL)	Andhra Pradesh
7	Hubli Electricity Supply Company Limited (HESCOM) Gulbarga Electricity Supply Company Limited (GESCOM) Mangalore Electricity Supply Company Limited (MESCOM) Bangalore Electricity Supply Company Limited. (BESCOM) Chamundeshwari Electricity Supply Corporation Limited (CESCOM)	Karnataka
8	Maharashtra State Electricity Distribution Company Limited (MSEDCL)	Maharashtra
9	Jharkhand Bijli Vitran Nigam Limited (JBVNL) Jharkhand Urja Sancharan Nigam Limited (JUSNL)	Jharkhand
10	Madhya Pradesh Poorv Kshetra Vidyut Vitaran Company Ltd Madhya Pradesh Paschim Kshetra Vidyut Vitaran Company Ltd	Madhya Pradesh
11	Chhattisgarh State Power Generation Company (CSPDCL)	Chhattisgarh
12	Purvanchal Vidyut Vitaran Nigam Limited (PuVVNL / DVVNL)	Uttar Pradesh State
13	TP Southern Odisha Distribution Limited (TPSODL) TP Central Odisha Distribution Limited (TPCODL) TP Northern Odisha Distribution Limited (TPNODL) TP Western Odisha Distribution Limited (TPWODL)	Odisha
14	West Bengal State Electricity Distribution Company Limited (WBSSEDCL)	West Bengal
15	Meghalaya Power Distribution Corporation Limited	Meghalaya
16	Tripura State Electricity Corporation Limited (TSECL)	Tripura
17	Assam Power Distribution Company Limited (APDCL)	Assam
18	PASCHIM GUJARAT VIJ COMPANY LIMITED (PGVCL) Dakshin Gujarat Vij Company Limited (DGVCL) Madhya Gujarat Vij Company Limited (MGVCL) Uttar Gujarat Vij Company Ltd. (UGVCL) Gujarat Energy Transmission Corporation Limited (GETCO)	Gujarat
19	Jammu Power Distribution Corporation Limited (JPDCL)	Jammu & Kashmir

Manufacturers Of All Types
Of L.T., H. T. & Transmission
Insulators (Polymer & Porcelain)



Prime Insulators Pvt Ltd
Ceramic Zone, Block No 134/P2,
AT&PO: Dalpur, Taluka: Pranitj,
District: Sabarkanata,
Pin Code: 383120.
GUJARAT, INDIA.



sales@primeinsulators.com
marketing@primeinsulators.com
info@primeinsulators.com



+91 98795 21374
+91 99252 37312



www.primeinsulators.com

